


 IMIR Logo

Research Brief

Volume 1 Number 1, February 1993

Modes of Admissions: How do Undergraduate Students Come to IUPUI?

Table of Contents

Introduction	Highlights	New, Continuing, and Returning Students	New to IU versus New to IUPUI
Inter-Campus Transfers	Transfers from Non-IU Institutions		Implications

Tables and Displays

- [Table 1. Fall Undergraduate Headcount Enrollment by Entry Status, 1988 to 1992](#)
- [Table 2. Fall Undergraduate Enrollment by Entry Status, 1988 to 1992 - The IUPUI Perspective](#)
 - [Table 3. Undergraduates New to IUPUI, Fall Semesters 1988 to 1992](#)
 - [Table 4. Fall Inter-Campus Transfers, 1988-1992](#)
- [Table 5. Fall Inter-Campus Transfers: Exports and Net Migration, 1988-1992](#)
- [Table 6. Transfers from Other Colleges and Universities, Fall 1988 to 1992](#)
 - [Display 1. Trends in Fall Undergraduate Enrollment by Entry Status](#)
 - [Display 2. Trends in New to IUPUI Undergraduate Enrollment](#)
 - [Display 3. Trends in Inter-Campus Transfers, 1988-1992](#)
 - [Display 4. Trends in Inter-Campus Imports, Exports, and Net Migration](#)
- [Display 7. Trends in Transfers from Other Colleges and Universities, Fall 1988 to 1992](#)

Introduction

IUPUI is characterized as having a non-traditional student population. We do not usually think of an 18 to 22 year old full-time student as being typical of IUPUI. In fact, nearly one-third (6,032 or 29%) of the 20,755 degree-seeking undergraduates enrolled this past fall were full-time and between the ages of 18 and 22. On the other hand, IUPUI does enroll an even larger number of degree-seeking

undergraduates who are over 25 and enrolled part-time (6,920 or 33%). Add to this 7,803 other degree-seeking undergraduates, 691 undergraduate non-degree students, 2,227 first professional students (medical, dental, and law), 2,516 degree-seeking graduate students, and 2,156 non-degree graduate students and you have an incredibly diverse student population. Students come to IUPUI at very different times in their lives, with differing backgrounds, and with very different goals and expectations for their academic experience.

In this research brief we consider one aspect of our diverse student body: through which admissions mechanism do our degree-seeking undergraduate students arrive. At a traditional college, 'first-time freshman' is the dominant entry mode. At an urban institution, such as IUPUI, transfers from other colleges are found in relatively large numbers. IUPUI has yet another mode of entry to consider: transfers from other IU campuses (inter-campus transfers).

(Back to [Table of Contents](#), [List of Displays](#))

Highlights

- New first-time freshman, or "beginners" comprised roughly one-eighth (12.9%) of the undergraduate student body in Fall 1992. This was down from roughly one-sixth (16.5%) in Fall 1988.
- Transfer enrollments from non-IU institutions have increased nearly 40 percent over the past five years.
- IUPUI is a net importer of students from the other IU campuses. Typically 1,000 transfer their IU enrollment to IUPUI while only about 500 leave IUPUI for other IU campuses. Approximately three-quarters of all IUPUI inter-campus transfer activity is with the Bloomington campus.
- Overall, new student enrollments have remained relatively stable over the past five years, decreases in "beginners" have been equally offset by gains in "transfers."
- There has been a significant increase in the number and proportion of IUPUI students enrolling continuously (i.e., from spring to fall). This group represented two-thirds of all Fall 1992 degree-seeking undergraduate.
- Returning "stopouts" comprise roughly one-eighth of the undergraduate student body.
- Students from Ball State University represent 15 percent of all transfer students (non-IU). Adding Purdue (W. Lafayette), Vincennes, Indiana State University, University of Indianapolis, and Butler University accounts for exactly one-half of all transfers to IUPUI.

(Back to [Table of Contents](#), [List of Displays](#))

New, Continuing, and Returning Students

To set the context for looking at new students (Students were considered "new" if their first enrollment was in the fall or either of the preceding summer sessions.), we first consider total undergraduate headcount enrollment over the past five years by entry status (This analysis considers only degree-seeking students, that is, "special" undergraduates were excluded. The data for earlier years are adjusted to account for deactivated records.). Table 1 shows these figures according to the "official" IU view of students: students are "new" if they never before enrolled at any IU campus. Students who are not new are characterized as either "continuing" from the prior spring semester, or "returning" after at least a one semester absence. Continuing and returning students are further separated according to whether they last attended IUPUI or another IU campus. Finally, students who last attended another IU campus are categorized according to whether or not they are

new to IUPUI. The top half of Table 1 displays the number of students in each category, and the bottom half provides the percentage distribution based on the each fall semester's total.

Table 1. Fall Undergraduate Headcount Enrollment by Entry Status, 1988 to 1992

HEADCOUNT		1988	1989	1990	1991	1992
TOTAL IUPUI Undergraduate Enrollment		16,787	18,311	19,228	20,384	20,755
New to the IU System	Beginner	2,778	3,303	2,830	2,785	2,687
	Transfer	926	773	1,090	1,183	1,289
	Other/Uknown	13	22	32	20	21
	Total New to IU	3,717	4,098	3,952	3,988	3,997
Continuing from Prior Spring Semester	Continuing at IUPUI	10,228	11,345	12,097	12,935	13,380
	Contin. from Oth. IU Campus					
	New to IUPUI	468	518	450	523	469
	Previously at IUPUI	140	178	182	182	173
	Total	608	696	632	705	642
Total Continuing	10,836	12,041	12,729	13,640	14,022	
Returning after Absence from IU System	Last Enr. at IUPUI	1,805	1,863	2,161	2,369	2,373
	Last Enr. at Other IU					
	New to IUPUI	347	239	290	295	283
	Previously at IUPUI	75	57	77	71	62
	Total	422	296	367	366	345
Total Returning	2,227	2,159	2,528	2,735	2,718	
Other/Unknown	Total Other	7	13	19	21	18
PERCENTAGE DISTRIBUTION						
New to the IU System	Beginner	16.5%	18.0%	14.7%	13.7%	12.9%
	Transfer	5.5%	4.2%	5.7%	5.8%	6.2%
	Other/Uknown	0.1%	0.1%	0.2%	0.1%	0.1%
	Total New to IU	22.1%	22.4%	20.6%	19.6%	19.3%
Continuing from Prior Spring Semester	Continuing at IUPUI	60.9%	62.0%	62.9%	63.5%	64.5%
	Contin. from Oth. IU Campus					
	New to IUPUI	2.8%	2.8%	2.3%	2.6%	2.3%
	Previously at IUPUI	0.8%	1.0%	0.9%	0.9%	0.8%
	Total	3.6%	3.8%	3.3%	3.5%	3.1%
Total Continuing	64.5%	65.8%	66.2%	66.9%	67.6%	
Returning after Absence from IU System	Last Enr. at IUPUI	10.8%	10.2%	11.2%	11.6%	11.4%
	Last Enr. at Other IU					
	New to IUPUI	2.1%	1.3%	1.5%	1.4%	1.4%
	Previously at IUPUI	0.4%	0.3%	0.4%	0.3%	0.3%
	Total	2.5%	1.6%	1.9%	1.8%	1.7%
Total Returning	13.3%	11.8%	13.1%	13.4%	13.1%	
Other/Unknown	Total Other	0.0%	0.1%	0.1%	0.1%	0.1%

(Back to [Table of Contents](#), [List of Displays](#))

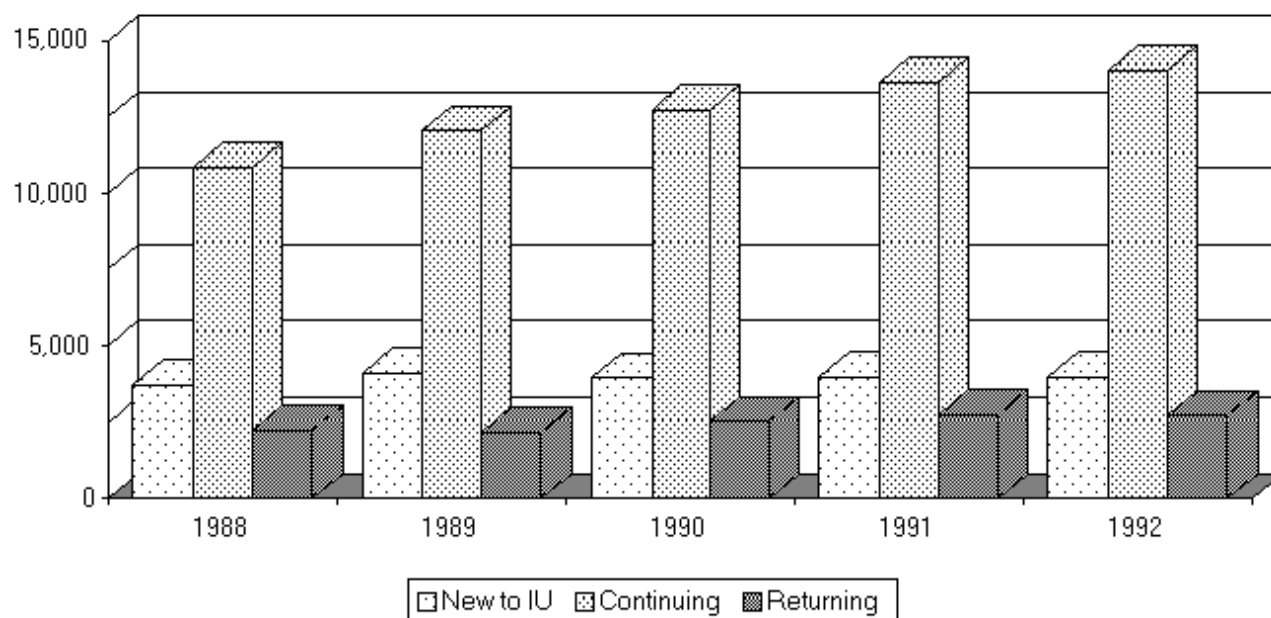
For the Fall 1992 Semester, fewer than one-fifth of IUPUI's degree-seeking undergraduates (19.3%) were new to the IU system. Furthermore, just over one-eighth (12.9%) were beginners (i.e., first-time freshman but not necessarily directly out of high school). Over the past five years, the number of

beginners has decreased slightly while the number of transfer students has increased slightly. Overall, the total number of "new to IU" students has remained relatively stable.

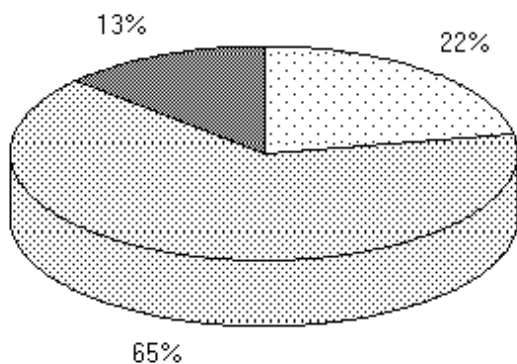
During this same time, the number of students enrolling continuously at IUPUI has increased steadily. As a result, continuing IUPUI students now constitute a larger percentage of the student base than in previous years (up from 60.9% in 1988 to 64.5% in 1992). When continuous enrollees who last attended other IU campuses are included, this group represents two-thirds (67.6%) of all students enrolled last Fall.

The final group includes students who returned to IUPUI after being absent for at least one semester (the prior spring). The size of this group has remained stable over the past five years, comprising roughly one-eighth of the total degree-seeking undergraduate population. Display 1 portrays these trends graphically.

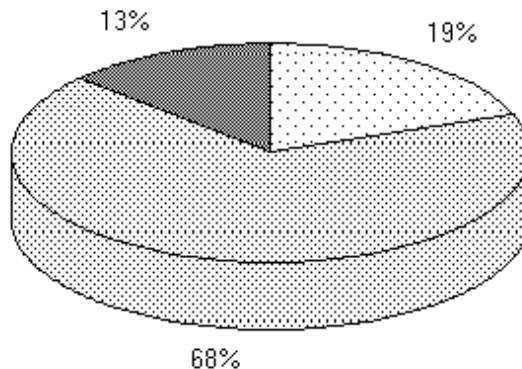
Display 1. Trends in Fall Undergraduate Enrollment by Entry Status



Fall 1988



Fall 1992



(Back to [Table of Contents](#), [List of Displays](#))

New to IU versus New to IUPUI

Table 2 shows these same data from a slightly different perspective. In this view, the concept of "new" versus "not new" is taken from an IUPUI perspective. That is, students who previously attended another IU campus, but not IUPUI, are categorized as new to IUPUI. In doing so, the number of "new" Fall 1992 enrollees increases from 3,997 (19.3%) to 4,749 (22.9%). The difference of 752 students represents "inter-campus" transfers who never before attended IUPUI. Table 2 also shows that the number of inter-campus transfers has fluctuated yearly but exhibits no general upward or downward trend in this limited time-frame.

Table 2. Fall Undergraduate Enrollment by Entry Status, 1988 to 1992 -- The IUPUI Perspective

HEADCOUNT		1988	1989	1990	1991	1992
TOTAL IUPUI Undergraduate Enrollment		16,787	18,311	19,228	20,384	20,755
New to IUPUI	Beginner	2,778	3,303	2,830	2,785	2,687
	Transfer (Non-IU)	926	773	1,090	1,183	1,289
	Inter-Campus Transfer	815	757	740	818	752
	Other/Unknown	13	22	32	20	21
	Total New to IUPUI	4,532	4,855	4,692	4,806	4,749
Not New to IUPUI	Last Attended IUPUI	12,033	13,208	14,258	15,304	15,753
	Continuous	10,228	11,345	12,097	12,935	13,380
	Returning from Leave	1,805	1,863	2,161	2,369	2,373
	Last Attended Oth. IU	215	235	259	253	235
	Continuous	140	178	182	182	173
	Returning from Leave	75	57	77	71	62
	Others/Unknown	7	13	19	21	18
	Total New to IUPUI	12,255	13,456	14,536	15,578	16,006
<hr/>						
PERCENTAGE DISTRIBUTION						
New to IUPUI	Beginner	16.5%	18.0%	14.7%	13.7%	12.9%
	Transfer (non-IU)	5.5%	4.2%	5.7%	5.8%	6.2%
	Inter-Campus Transfer	4.9%	4.1%	3.8%	4.0%	3.6%
	Others/Unknown	0.1%	0.1%	0.2%	0.1%	0.1%
	Total New to IUPUI	27.0%	26.5%	24.4%	23.6%	22.9%
Not New to IUPUI	Last Attended IUPUI	71.7%	72.1%	74.2%	75.1%	75.9%
	Continuous	60.9%	62.0%	62.9%	63.5%	64.5%
	Returning from Leave	10.8%	10.2%	11.2%	11.6%	11.4%
	Last Attended Oth. IU	1.3%	1.3%	1.3%	1.2%	1.1%
	Continuous	0.8%	1.0%	0.9%	0.9%	0.8%
	Returning from Leave	0.4%	0.3%	0.4%	0.3%	0.3%
	Others/Unknown	0.0%	0.1%	0.1%	0.1%	0.1%
	Total New to IUPUI	73.0%	73.5%	75.6%	76.4%	77.1%

(Back to [Table of Contents](#), [List of Displays](#))

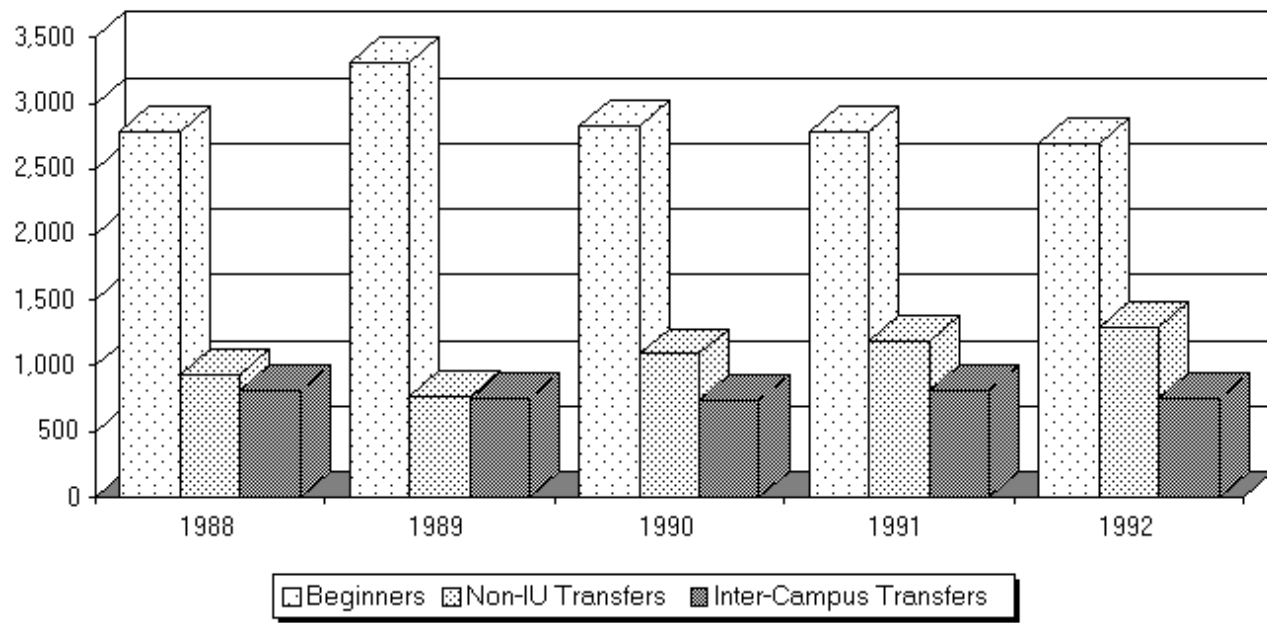
Table 3 focuses on new students only, that is, new to IUPUI. This table and the accompanying Display 2 further emphasize the trend toward diminishing numbers of first-time college "beginners," increasing numbers of non-IU transfers, and fluctuating numbers of inter-campus transfers. The total

number of students who are new to IUPUI each fall semester has remained relatively stable over the past five years, averaging about 4,725 per year.

Table 3. Undergraduates New to IUPUI, Fall Semesters 1988 to 1992

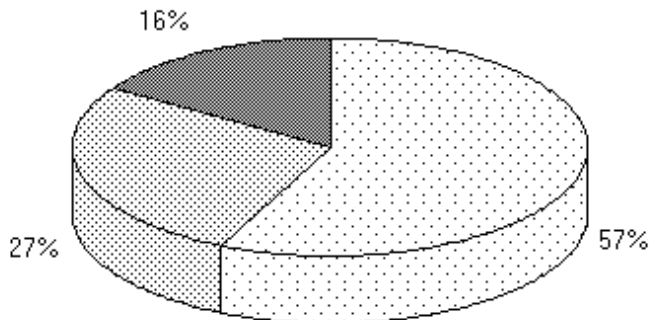
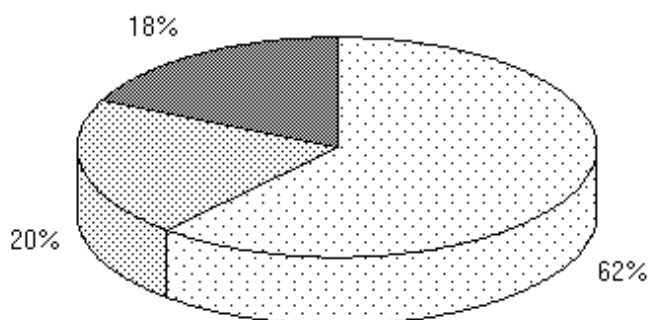
HEADCOUNT		1988	1989	1990	1991	1992
New to IU System	Beginners	2,778	3,303	2,830	2,785	2,687
	Transfers	926	773	1,090	1,183	1,289
	Other/Uknown	13	22	32	20	21
	Total New to IU	3,717	4,098	3,952	3,988	3,997
Not New to IU System	Cont. from Other IU	468	518	450	523	469
	Ret. after Absence	347	239	290	295	283
	Total Not New to IU	815	757	740	818	752
Total New to IUPUI		4,532	4,855	4,692	4,806	4,749
PERCENTAGE DISTRIBUTION						
New to IU System	Beginners	61.3%	68.0%	60.3%	57.9%	56.6%
	Transfers	20.4%	15.9%	23.2%	24.6%	27.1%
	Other/Uknown	0.3%	0.5%	0.7%	0.4%	0.4%
	Total New to IU	82.0%	84.4%	84.2%	83.0%	84.2%
Not New to IU System	Cont. from Other IU	10.3%	10.7%	9.6%	10.9%	9.9%
	Ret. after Absence	7.7%	4.9%	6.2%	6.1%	6.0%
	Total Not New to IU	18.0%	15.6%	15.8%	17.0%	15.8%

Display 2. Trends in New to IUPUI Undergraduate Enrollment



Fall 1988

Fall 1992



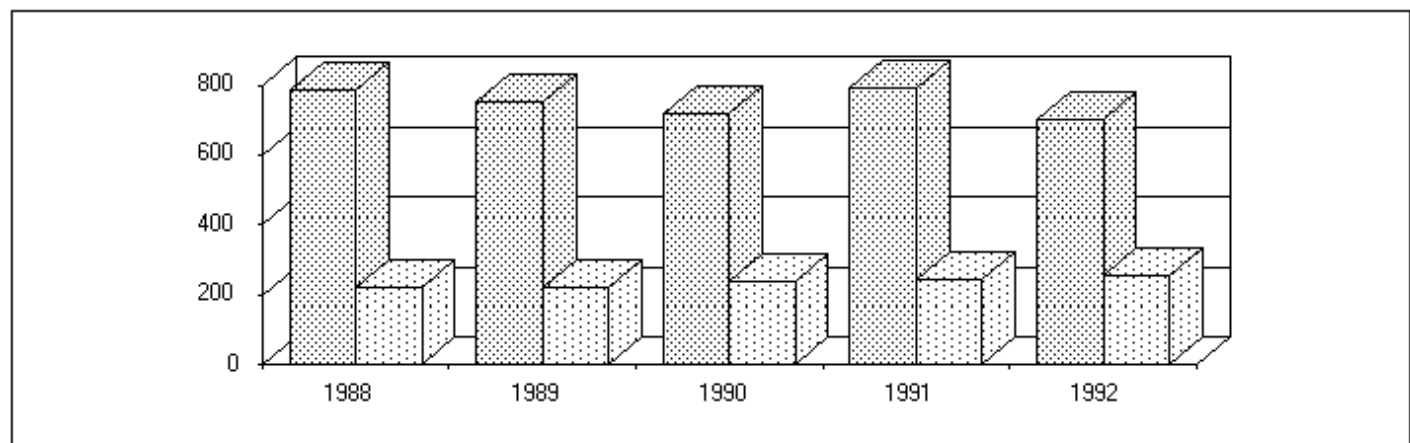
(Back to [Table of Contents](#), [List of Displays](#))

Inter-Campus Transfers

For each of the past five years, just over 1,000 students have transferred their IU enrollments to IUPUI from one of the other IU campuses. Table 4 and Display 3 provide data on the rates of inter-campus transfer. About three-quarters of these inter-campus transfers have never attended IUPUI before and about one-quarter have. Nearly three-quarters of all inter-campus transfers to IUPUI come from Bloomington. Bloomington is an especially large feeder of returning inter-campus transfers, that is, students who had attended IUPUI prior to attending Bloomington and subsequently returned to IUPUI.

Table 4. Fall Inter-Campus Transfers, 1988-1992

		1988	1989	1990	1991	1992
New to IUPUI	Bloomington	601	551	487	559	507
	East	42	32	40	41	49
	Fort Wayne	33	22	38	25	30
	Kokomo	69	74	83	71	73
	Northwest	19	35	22	34	27
	South Bend	33	29	35	53	40
	Southeast	17	14	35	35	26
	Unknown	7	13	19	21	18
Grand Total	821	770	759	839	770	
Not New to IUPUI	Bloomington	186	200	231	230	195
	East	10	7	5	4	8
	Fort Wayne	1	5	0	2	6
	Kokomo	13	8	13	11	17
	Northwest	3	5	0	1	1
	South Bend	0	5	5	4	4
	Southeast	1	6	5	1	4
	Unknown	7	13	19	21	18
Total	221	249	278	274	253	
TOTAL IMPORTS	Bloomington	787	751	718	789	702
	East	52	39	45	45	57
	Fort Wayne	34	27	38	27	36
	Kokomo	82	82	96	82	90
	Northwest	22	40	22	35	28
	South Bend	33	34	40	57	44
	Southeast	18	20	40	36	30
	Unknown	14	26	38	42	36
Grand Total	1,042	1,019	1,037	1,113	1,023	

Display 3. Trends in Inter-Campus Transfers, 1988-1992

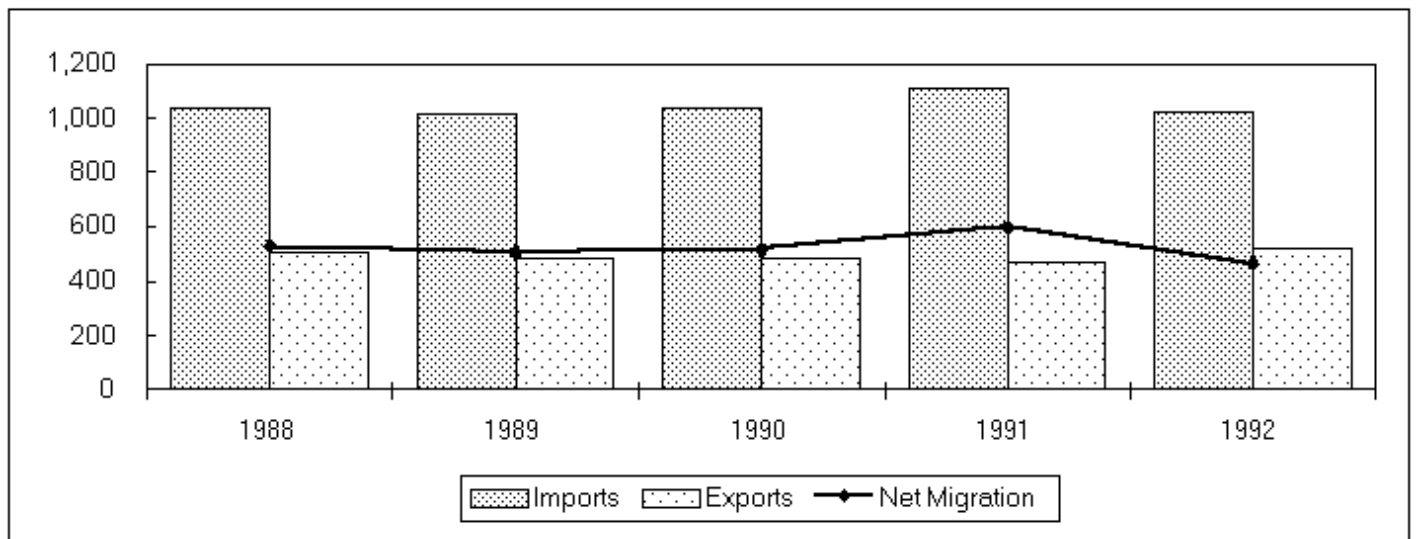
(Back to [Table of Contents](#), [List of Displays](#))

Table 5 compares the number of inter-campus "imports" to IUPUI with our "exports" to other campuses. An "export" is defined as a student enrolled at another campus during the fall semester whose last IU attendance was at IUPUI. IUPUI is clearly a net importer of IU students: typically twice as many students come to IUPUI from other IU campuses than leave.

Table 5. Fall Inter-Campus Transfers: Exports and Net Migration, 1988-1992

		1988	1989	1990	1991	1992
TOTAL EXPORTS	Bloomington	365	370	351	354	348
	East	24	21	24	12	28
	Fort Wayne	19	26	20	19	19
	Kokomo	31	36	31	41	52
	Northwest	23	10	21	16	27
	South Bend	23	14	20	16	22
	Southeast	17	14	19	17	22
	Total	502	491	486	475	518
Net Migration	Bloomington	422	381	367	435	354
	East	28	18	21	33	29
	Fort Wayne	15	1	18	8	17
	Kokomo	51	46	65	41	38
	Northwest	(1)	30	1	19	1
	South Bend	10	20	20	41	22
	Southeast	1	6	21	19	8
	Total	526	502	513	596	469

Display 4. Trends in Inter-Campus Imports, Exports, and Net Migration



(Back to [Table of Contents](#), [List of Displays](#))

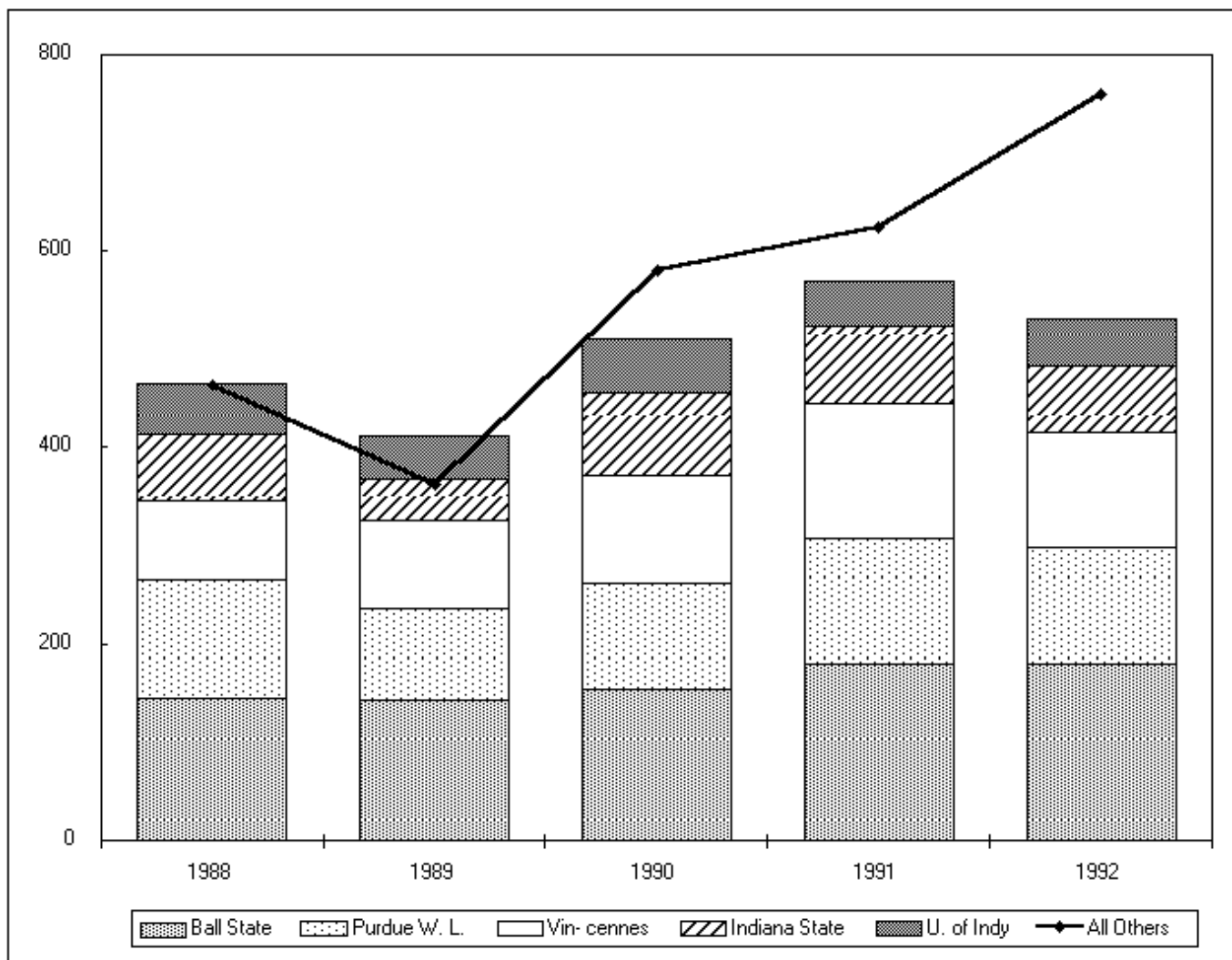
Transfers from Non-IU Institutions

Among the new student population, the fastest growing segment is transfers from non-IU institutions. In Fall 1992, 1,289 students entered the IU system, at IUPUI, after having attended another college or university. This represents a 39 percent increase from the 926 students who transferred in for the Fall 1988 semester.

The institutions from which IUPUI receives most of its transfer students are shown in Table 6. Included are institutions from which four or more students transferred in any of the past five years. Colleges and Universities in Indiana are presented in the top portion of the table, followed by out-of-state institutions. Within these categories, institutions are sorted according to the total number of transfers coming to IUPUI over the past five fall semesters.

Table 6. Transfers from Others Colleges and Universities, Fall 1988 to 1992**(Institutions from which 4 or more students have transferred)**

		1988	1989	1990	1991	1992	Total
Indiana	Ball State Univ	144	142	154	180	179	799
	Purdue Univ W Lafyte	122	95	108	128	119	572
	Vincennes University	79	89	109	135	117	529
	Indiana State Univ	67	43	83	79	66	338
	Univ Of Indianapolis	51	42	56	46	48	243
	Butler University	26	24	29	24	26	129
	Marian College	17	11	25	17	19	89
	Indiana Vo Tec Indpls	1	0	0	11	48	60
	Franklin College	6	11	15	15	13	60
	Univ Southern Indiana	14	10	9	17	9	59
	Anderson University	4	6	8	9	4	31
	Univ Evansville	7	3	4	7	7	28
	Hanover College	4	3	4	5	8	24
	DePauw University	6	3	2	3	7	20
	Purdue Univ Calumet	0	3	0	5	9	17
	Rose-Hulman Institute	6	3	3	3	4	18
	Indiana Vo Tec Colmb	0	0	0	0	14	14
	Manchester College	1	6	3	3	2	15
	Indiana Wesleyan Univ	4	1	1	4	2	13
	Purdue Univ FT Wayne	0	1	0	3	6	10
	Holy Cross College	0	0	4	1	2	7
	Purdue Univ Westville	0	0	2	0	4	6
	Indiana Vo Tec Muncie	0	0	0	0	4	4
Other States	Univ Maryland Col Pk	10	4	6	4	5	29
	Danville Area Cmty Col (IL)	3	3	4	6	4	20
	Western Kentucky Univ	6	1	4	3	5	19
	Univ Louisville (KY)	4	4	4	2	4	18
	Univ Cincinnati (OH)	4	7	4	1	3	19
	Wabash Valley Coll (IL)	1	3	7	3	0	14
	Michigan State Univ	0	1	1	3	6	11
	Valencia Cmty Coll (FL)	1	0	2	2	6	11
	Coll Of Dupage (IL)	0	1	4	4	2	11
	Illinois State Univ	3	3	5	0	2	13
	Parkland College (IL)	1	6	3	0	2	12
	Liberty University (VA)	1	0	2	4	2	9
	Delta College (MI)	0	1	1	5	2	9
	Jefferson Cmty C (KY)	1	0	1	2	4	8
	Univ Kentucky Lexngt	0	0	3	1	4	8
	Oakland Comm Coll (MI)	0	1	1	2	4	8
	Illinois Central Coll	1	0	5	0	2	8
	Austin Peay St Univ (TN)	0	0	2	1	4	7
	Centrl Texas Coll	1	1	0	1	4	8
	Alabama Agri Mech Univ	0	0	1	0	5	6
	San Antonia College (TX)	0	6	1	0	1	8
	Kalamazoo Valley C C (MI)	0	1	0	0	4	5
	Pensacola Junior Col (FL)	6	0	0	0	1	7
Univ Missouri StLous	1	0	4	0	0	5	
Total Transfers		926	773	1 090	1 191	1 289	5 269

Display 7. Trends in Transfers from Other Colleges and Universities, Fall 1988 to 1992

(Back to [Table of Contents](#), [List of Displays](#))

The first three institutions listed--Ball State University, Purdue University, and Vincennes University--account for 36 percent of all transfers to IUPUI over the last five years. Ball State alone accounts for over 15 percent of the grand total. Adding the next three highest "feeder" institutions--Indiana State University, University of Indianapolis, and Butler University--brings the cumulative total to 50 percent of all transfers. The first out-of-state institution--the University of Maryland--ranks 12th overall.

The trend towards increasing transfer enrollments is more prevalent among the schools that have not been the top "feeders" to IUPUI.

Students transferring from Indiana Vocational Technical College (Ivy Tech) represent a special case in this table. Until 1991, students who attended Ivy Tech (Indianapolis) could not transfer credits to IUPUI. With the implementation of the transfer articulation agreement between the two schools, IUPUI's admissions office started recording all students who previously attended Ivy Tech as being transfers, regardless of whether they presented any transferable credits. For example, the Fall 1992 figure of 48 transfers from Ivy Tech include only a few who participated in the articulation agreement. That is, most of the 48 students did not transfer any degree credits to IUPUI. Prior to 1991, when all Ivy Tech credits were non-transferable, students coming to IUPUI from Ivy Tech were recorded as

"beginner" students. Regardless of the change in procedure, it is likely that transfer activity from Ivy Tech will increase in the coming years as the articulation agreement is further developed.

(Back to [Table of Contents](#), [List of Displays](#))

Implications

The decreasing number of "beginner" students at IUPUI can be attributed to several factors. Regional demographics reveal a decline in the number of high school graduates over the past several years. Projections indicate a "bottoming out" over the next year or two, followed by very modest increases. The tightening of IUPUI's admissions policies is another factor that is just beginning to effect our numbers.

Any changes in numbers of incoming first-time freshman will likely reflect further adjustments in IUPUI's admissions policies or recruiting practices, rather than any changes in the freshman market.

The increase in transfer students is also attributable to several factors. Attraction to specific academic programs at IUPUI and the economy of living at home are likely contributing factors. These increases are not clearly attributable to any external demographic trends. IUPUI is simply attracting more transfer students.

The increasing number of transfer students has significant implications for the undergraduate education experience. Transfer students typically persist to graduation at higher rates than beginners. They come to IUPUI with college-level experience and are often committed to a particular academic program. On the other hand, transfer students make it more difficult to implement comprehensive undergraduate programs, such as general education. It is difficult to equate experience at a host of other institutions with specific IUPUI requirements. These difficulties can be minimized through several strategies including transfer articulation agreements and performance-based evaluations.

The significant number of inter-campus transfers represents a group of students who have not received significant attention as entering students at the IUPUI campus. Being part of "one university with eight front doors" does benefit IU students by allowing them to transfer their enrollments with ease from one campus to another. But along with this benefit, inter-campus transfer students may often find the campus to which they transfer does not offer the kinds of support services to them that are offered to other new students.

This analysis examined only fall semester student entry in order to make comparisons relative to fall census enrollments. Examining annual admissions statistics shows an even more prominent role for transfer students. Whereas beginners outnumber transfers by roughly a 5:2 margin during the fall, they enter IUPUI in roughly even numbers in the spring. For the entire 1992-93 school year, IUPUI enrolled 3,353 beginners and 1,988 transfer for a 5:3 ratio overall.

As IUPUI seeks to further develop activities to assess and improve the undergraduate student experience, all groups of students must be included. Traditional views of students, according to which many of the externally imposed guidelines are developed, often focus on a more narrowly defined segment of our population. The foremost example of this are the Student Right-to-Know and NCAA retention reporting guidelines. These two efforts focus on "first-time full-time" freshman. For IUPUI, this group typically numbers about 1,000 each fall. This represents less than one-fifth of all degree-seeking undergraduate students who newly enroll at IUPUI each academic year.

(Back to [Table of Contents](#), [List of Displays](#))

Research Brief is a periodic publication of the Office of Information Management and Institutional Research at Indiana University Purdue University Indianapolis.

Go to [Office of Information Management and Institutional Research](#) Home Page